

Lal Lal Wind Farm Project Update August 2013



Welcome to the latest project update for the Lal Lal Wind Farm.

In late April, WestWind Energy (WestWind) commenced site establishment works for Stage 1 of the Lal Lal Wind Farm at Yendon. This work involved establishing the temporary construction compound;

installation of storage, signage and temporary amenities buildings; foundations for permanent amenities building; levelling of the sub-station area; construction of crossover and main site entrance and commencing construction of internal access tracks.

Further information on all of our projects can be found on our website at www.w-wind.com.au.

Should you have any questions regarding our projects, please call us on 5421 9999, or email reception@w-wind.com.au.



Site establishment works

WestWind thanks the following local contractors used in the site establishment works:

Karl Britt Earthworks Contracting
Boral Quarries
Davies Concreting
Reinforced Concrete Pipes
DC Containers

Yendon
Dunnstown
Scotsburn
Melton
Footscray

Elaine Farm Supplies
Sign-a-rama, Ballarat
O.R.L. Fencing
South West Drilling
Walsh Quarries

Elaine
Ballarat
Bannockburn
Geelong
Dunnstown

Current news and activities

Next steps

Over the winter months activities on-site will be quiet. Minor construction activity will continue and is likely to include the construction of additional vehicle crossovers and the internal track network. WestWind envisages that turbine installation will begin in late 2014 and be completed by late 2015.

Geotechnical investigations

The drilling equipment you may currently see at Yendon is not exploring for polluting coal seam gas. Geotechnical investigations are underway to allow for turbine foundations to be designed specifically for each location. Such investigations are part of most civil construction projects.



Geotechnical investigation. Bore hole drilling



Geotechnical investigation. Backhoe digging a test pit

Your involvement

Landscape offers

Many people like the look of wind turbines. However there are some who prefer not to see them from their home or garden. The wind farm permit requires the company to provide planting of shrubs or trees to soften views of the wind farm for dwellings within 3km of wind turbines, if requested.

Please register your interest if you are close to the wind farm, have reasonable grounds to believe you would see the wind turbines, and wish

to take up offers of planting. Alternatively, you may wish to wait and see what the wind farm looks like, before limiting your views. As such, our planting offer remains open for one year after the last wind turbine has been commissioned, which means there is plenty of time remaining before you need to decide what you would like to do.

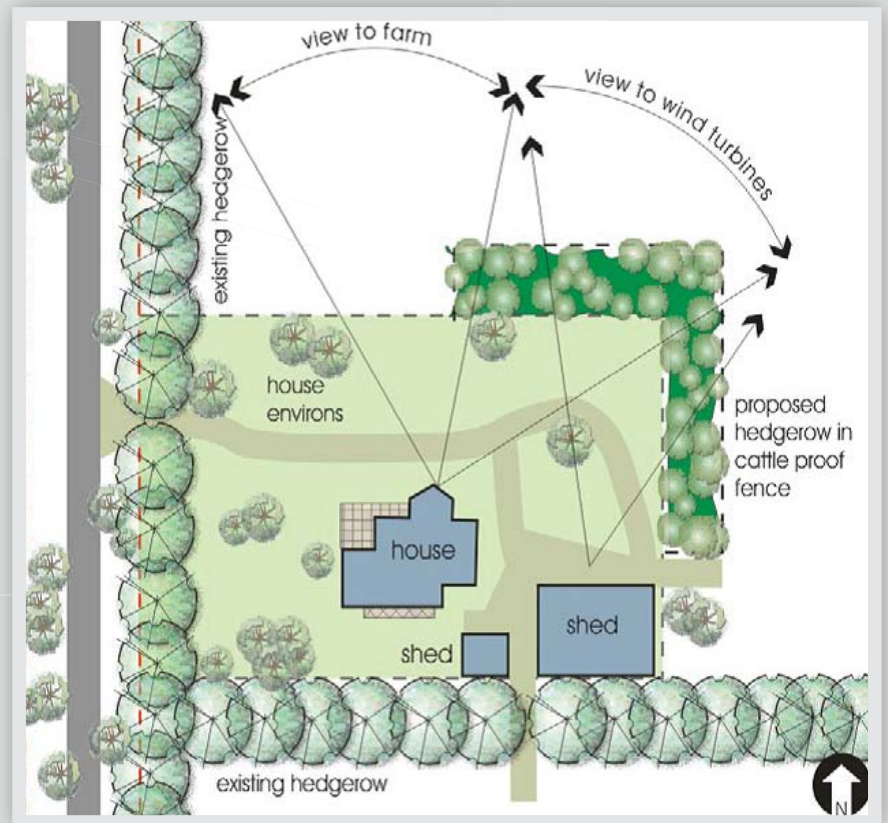
Lal Lal Community Reference Group (CRG)

The Lal Lal Community Reference Group considers matters of relevance to the community before, during and after construction of the wind farm; and will make recommendations on the allocation of the community development fund once the project is fully commissioned. There are positions still available for additional members so if you are interested in becoming part of the CRG, please refer to our website for further information, and to download the Nomination Form.

Always happy to talk

Please remember that representatives from WestWind remain available to individually meet with residents in the vicinity of the project and discuss any concerns and ideas you may have about the wind farm.

Our website www.w-wind.com.au also contains information on the project, such as permits and layouts; along with general information on wind energy.



Did you know that ...

Australia has 59 operating wind farms, with a total of 1,345 operating turbines, powering over a million homes?

South Australia has the largest installed capacity with around 49% of the nation's total wind capacity?

Wind is now cheaper per megawatt hour to install than new coal fired electricity generation?

Wind and other renewables have caused the wholesale price of electricity to fall?

Correcting local myths



Independent background noise monitoring was conducted prior to wind farm design and approval. Additionally, a noise compliance plan has been prepared and approved by the current Planning Minister, which will include further independent noise monitoring after construction. The wind farm must not exceed 40 decibels (or 5 decibels above the background noise level) when measured 20 metres from a home.



A total of 71 homes (34 at Elaine and 37 at Yendon) are within 2km of approved wind turbine locations. Furthermore, the focus on homes within 2km is misleading. The project has been designed to easily comply with all relevant standards, including those specific to local amenity.

The Lal Lal Wind Farm will have an installed capacity of up to 150MW which is equal to the yearly electricity consumption of 75,000 average Victorian homes.

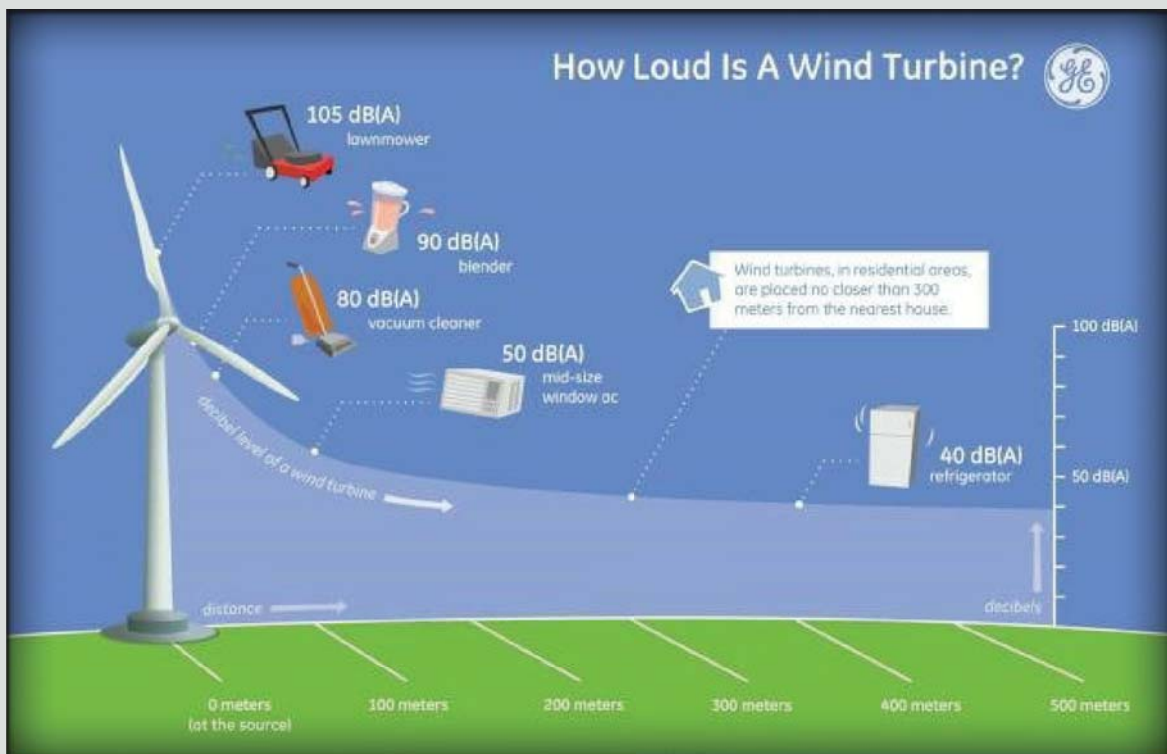
01

The planning permit and the *Road Management Act 2004* ensure that Moorabool Shire will not be out of pocket with regard to road upgrades required for the project, or for damage to roads resulting from construction.

02

When operating, Moorabool Shire can expect approximately \$233,424 in additional rates each year from the Lal Lal wind farm.

03



Decibels and Distances (source: GE)