



GOLDEN PLAINS WIND FARM

COMMUNITY BENEFIT FUND GUIDELINES

The Golden Plains Wind Farm community benefit fund provides financial support for a range of community-based initiatives, projects and events that benefit local communities. The program targets a range of community needs including; health and social welfare, safety, environment, education and youth, sport and recreation, culture, arts and economic development.

The following guidelines are designed to assist groups and organisations who wish to apply for funding for an initiative, project or event around the Golden Plains Wind Farm.



How to Apply

Step 1

Read the Guidelines on the next page to check if your community initiatives are eligible for funding under our Community Benefit Fund program.

Step 2

Fill in the application form, which can be found at the back of this document or call on (03) 5421 9999 for more information.

GOLDEN PLAINS WIND FARM

Office 4, Nexus Centre,
17 Goode Street
Gisborne VIC 3437

Email:

info@goldenplainswindfarm.com.au

Web:

goldenplainswindfarm.com.au

Funding Guidelines

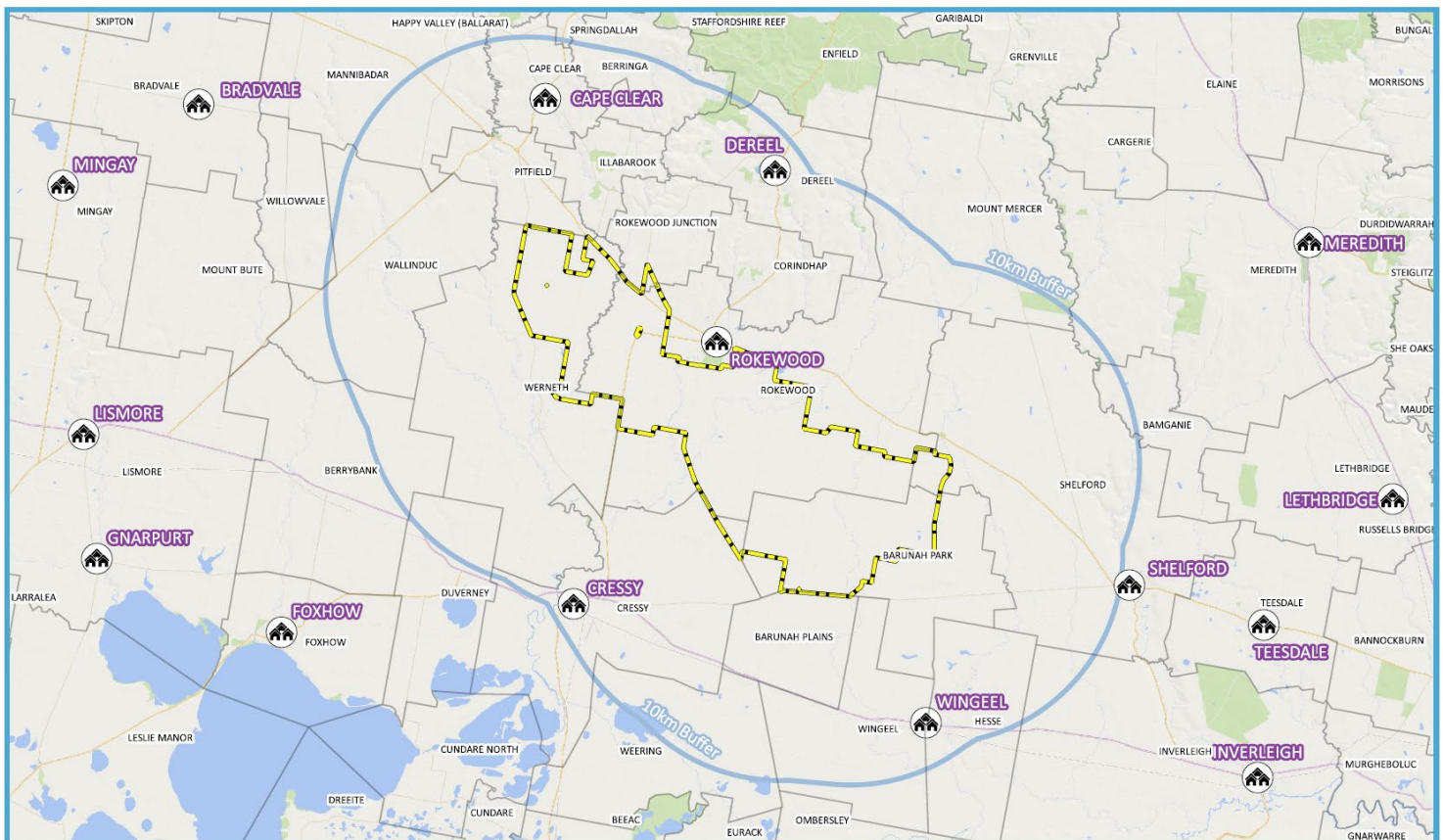
What is the objective of the Community Benefit Fund?

The Golden Plains Wind Farm community fund has been established by Golden Plains Wind Farm Pty Ltd, to fund local projects and organisations that benefit the wider community during the construction and operation of the wind farm. Golden Plains Wind Farm has a genuine interest in building the capacity of the communities in which it operates. A Community Reference Group (CRG) has been appointed to assess all applications and to help determine how best to allocate funds and in-kind contributions to maximise benefits for communities within and around the wind farm.

The key objective of the funding is to provide financial support to not-for-profit community groups and organisations that are working to make a positive and lasting contribution to the nearby communities.

What will Golden Plains Wind Farm fund?

Golden Plains Wind Farm will consider funding locally run initiatives for Incorporated or Not for Profit Community groups, projects/programs or facilities that are located within, or provide a direct benefit to, the community within 10km of the Golden Plains Wind Farm boundary.



<p>Golden Plains Wind Farm</p> <p>Neighbouring Localities</p>	<p>Workspace: GPWF_Town_Within10km_V01-01 Layout Name: Localities_Within10km Layout Version: V01-01 Paper Size: A4 Scale: 270000 Date: 2019-06-03 Drawn By: Tim Clifton QGIS Version: 30603 CRS: EPSG:28354</p>	<p>Legend</p> <ul style="list-style-type: none">  Project Boundary  10km Project Buffer  Nearby Locality 	<p>2 0 2 4 6 8 km</p> <p></p> <p></p> <p>Disclaimer This product has been created with the highest degree of accuracy possible. However, WestWind Energy, nor any of its contractors or suppliers can be held responsible for any damages due to errors or omissions in this product. Depiction of boundaries is not authoritative.</p>	<p>WestWind ENERGY</p> <p><i>Using clean energy and innovation to bring light to people's lives</i></p> <p>©WestWind Energy Pty. Ltd. 2016</p>
--	---	---	--	---

All applications must demonstrate:

- tangible benefits for local communities
- projects will be valued and visible in the community
- long-term sustainable benefits without creating ongoing dependency on Golden Plains Wind Farm Community Benefit Fund
- potential to strengthen Golden Plains Wind Farm's presence in the community.
- suitable governance structures, full financial and legal disclosure on the activity and agree to be subject to independent audit
- the project will not have a detrimental or negative impact on other community facilities and services

Applications that have a dollar for dollar contribution or which leverage other funding sources will be favourably considered, as will those that show in-kind support/contribution.

The Community Benefit Fund is committed to supporting projects that benefit the community surrounding the Golden Plains Wind Farm. Preference for funding will be given to programs that support the following priority focus areas:

➤ **Community Development**

- Promotion of industry, commerce, agriculture, culture and arts
- Renovation and upgrade of community buildings
- Community awareness of environment and sustainability
- Projects that attract government funding
- Projects that encourage local economic development and skill development

➤ **Education & Training**

- Advancement of education, research and analysis and the grant of scholarships
- Early childhood and youth education enhancement programs
- Tertiary education/ TAFE scholarships
- Apprenticeships and Traineeships
- Programs that promote cross sector skill development
- Work placement programs in partnership with local educational facilities, prizes for students
- Programs encouraging flexible learning, further education and improved employability

➤ **Health / Wellbeing**

- Promotion and enhancement of community participation and social cohesion
- Promotion, enhancement and development of health, health care, child-care, aged care, mental health and assistance to disadvantaged persons.
- Programs/ initiatives that encourage medical and health professionals to practice in the region
- Emergency services support
- Sport and social clubs
- Programs and projects that improve accessibility and inclusion for people with disability or the elderly

➤ Environment

- Conservation, protection, restoration, preservation,
- Expansion and enhancement of the natural environment
- Programs that support prevention of local environment degradation
- Initiatives that enhance the natural environment of the community
- Initiatives that enhance understanding of local cultural heritage

What will not be funded by Golden Plains Wind Farm?

Golden Plains Wind Farm will not support any programs that may breach its code of conduct policy or other regulatory, licensing or statutory commitments.

These include but are not limited to:

- Political organisations or campaigns;
- Religious activities;
- Direct or indirect competitor to Golden Plains Wind Farm or their Investors;
- Funding for commercial enterprises;
- Core funding that is the responsibility of Federal, State or Local Government;
- Projects or research that is in opposition to renewable energy;
- Repayment of debts and loans;
- Salaries and wages;
- Administration expenses such as stationery, postage, office supplies;
- Rent and lease costs (not including facility hire);
- Purchase of equipment/service for an individual;
- Funding for a staff or member social event;
- Overseas travel;
- Gifts;
- Grant writer fees;
- Endeavours for personal or commercial gain;
- Applications seeking retrospective funding i.e. for costs already incurred before approval of funding is given;
- Ongoing operational costs; or
- Applications to cover the costs of alcohol, drugs, gambling or any illegal or unethical activities.

How much money can I apply for?

Golden Plains Wind Farm has a limited budget available for the Community Benefit Fund. Applications can specify the amount required, and Golden Plains Wind Farm will assess the cost of the initiative in relation to the outcomes achieved for the community, as part of the funding decision process.

Applicants may receive less funding than specified in their application.

Successful applicants must assume all responsibility for the project, initiative or event they are running. This includes having an adequate safety system in place, necessary approvals, public liability insurance and any other risk management strategies applicable to the organisation or activity.

When will applications be assessed?

Applications will be administered twice a year. The application process will adhere to the following timelines:

Round 1

- January - February- requests for applications for round 1 of funding,
- March - the CRG to review and prioritise the applications,
- April – Prioritised applications forwarded to Golden Plains Wind Farm for consideration and endorsement,
- May – CRG advised of funding outcomes and notification of applicants, and
- June – funds released for successful round 1 recipients

Round 2

- July - August - requests for applications for round 2 of funding
- September - the CRG to review and prioritise the applications,
- October – Prioritised applications forwarded to Golden Plains Wind Farm for consideration and endorsement,
- November – CRG advised of funding outcomes and notification of applicants, and
- December-January – funds released for successful round 2 recipients.

All eligible applications, from Incorporated or Not for Profit Entities meeting the selection criteria will be reviewed and considered by the Community Reference Group (CRG). The CRG will meet to discuss and determine, through consensus, which application/s it will recommend for funding by the Community Benefit Fund. The final funding decision will be made by the operators of the Golden Plains Wind Farm.

Application processing and funding allocation will also consider the funding cycle for other programs. For example, groups applying to the Community Benefit Fund may also wish to apply for other, complimentary grants.

What criteria will be used to evaluate applications?

Applications will be assessed by the CRG based on the following criteria. Projects which best meet the criteria will be recommended for funding by Golden Plains Wind Farm. Due to the limited funds available in each year, it may not be possible to fund all applications.

Selection criteria	Weighting
<ul style="list-style-type: none"> ➤ Project benefits <ul style="list-style-type: none"> ○ Direct community benefit. ○ Quality of life/community wellness enhancement. ○ Program/ project operational efficiencies. ○ Demographics served: disadvantaged community, people with disability, youth, elderly etc. 	30
<ul style="list-style-type: none"> ➤ Target community need <ul style="list-style-type: none"> ○ Public safety/improved access. ○ Provide a direct service to the community. ○ Council/community support. ○ Benefit to environment ○ Education and training outcome ○ Health and wellbeing outcome ○ Community development outcome 	30

<ul style="list-style-type: none"> ➤ Availability of funding <ul style="list-style-type: none"> ○ Number of successful previous applications. ○ Demonstrated need for financial assistance. 	10
<ul style="list-style-type: none"> ➤ Project/ program viability <ul style="list-style-type: none"> ○ Capability of applicant to successfully deliver project (i.e. organisation size/ representation, prior experience). ○ Duplication: the extent to which project or program duplicates other available facilities or programs in the area. 	10
<ul style="list-style-type: none"> ➤ Location of project <ul style="list-style-type: none"> ○ Located within, or provide a direct benefit to, the community within 10km of the Golden Plains Wind Farm boundary. 	20

Where can I send an application for funding?

Completed and signed applications, together with supporting attachments are to be forwarded by post or email to:

Post

Community Benefit Fund
Golden Plains Wind Farm
Office 4, Nexus Centre
17 Goode St
Gisborne, Victoria, 3437

or

Email

info@goldenplainswindfarm.com.au

How will I know if my application is successful?

All applications lodged will receive a response from the Community Reference Group, via email or post, advising of the outcome of their application. All applications are treated as public documents. Should applicants not want details or components of their application made public, this should be stated clearly within the application.

When an application has been approved, the Golden Plains Wind Farm will make the necessary payment arrangements.

What reporting is required for approved applications?

Reporting on completed projects is required to ensure that the target community and the CRG can be confident that allocated funds have been used effectively.

Standard templates will be provided to all successful applicants. Applicants must submit final reports using these templates. Funding recipients must permit a representative of the Community Benefit Fund to examine records relating to the expenditure of funds to determine if the grant has been used for its intended purpose.

How will Golden Plains Wind Farm's funding be acknowledged?

In order to recognise the Golden Plains Wind Farm as a source of funding for the community, successful applicants are required to acknowledge the support provided by the wind farm. The specific mechanism for this acknowledgement may be part of a special condition included with the notification of funding.

Common methods for recognising the wind farm include plaques, signage, acknowledgment in newsletters, speeches and media releases, and displaying the Golden Plains Wind Farm logo in project material. Any costs for signs, plaques, etc must be covered in the project costs. Golden Plains Wind Farm must approve in writing, the final wording and layout of the acknowledgement.

Application Form

Round 1, 2019 – Available funds: \$10,000

Golden Plains Wind Farm has established a Community Benefit Fund to provide money for projects of social, economic or environmental benefit to the **communities within 10km of the wind farm boundary**. This may include funding for local sporting groups, charities, community groups, education, culture, arts and other not-for-profit organisations or other community needs.

Applications will be assessed by the Golden Plains Wind Farm Community Reference Group (CRG), which is a committee of eight community members. The CRG will make recommendations for funding to the wind farm operator. All applicants will then be advised accordingly.

Eligibility

Before completing the application form below please ensure you meet the eligibility for funding. If you have any questions about your organisation's eligibility, please contact the Community Engagement team using the details below.:

- Proof of not-for-profit organisation (i.e. incorporation, charter, prospectus, auspicing body or other evidence).
- The project will provide benefit or services to communities that surround the Golden Plains Wind Farm.
- The organisation has been in existence for more than 12 months.

If you do not meet the eligibility criteria, please see the project website (goldenplainswindfarm.com.au) for a list of groups you may be able to work with to apply.

To apply for a grant please complete the four simple steps on this form and return it to Golden Plains Wind Farm Community Benefit Fund. Applications open on Saturday 20 July, 2019 and close on Thursday 12 September, 2019.

Return the completed form and any supporting documentation to:

Post

Community Benefit Fund
Golden Plains Wind Farm
Office 4, Nexus Centre
17 Goode St
Gisborne, Victoria, 3437

or

Email

info@goldenplainswindfarm.com.au

Applications must be received by 5pm on Thursday 12 September, 2019

If your organisation has any questions regarding the Golden Plains Wind Farm Community Benefit Fund, please contact WestWind Energy's Community Engagement team on 03 5421 9999, or email:

info@goldenplainswindfarm.com.au

STEP 1: YOUR DETAILS

1. Title of the project:

2. Tell us in 50 words or less, about your project

3. Total cost of the project

4. Total funds requested from Golden Plains Wind Farm

Applicants may receive less funding than specified in their application.

5. Association Name

Note: Please provide proof of not-for-profit organisation (i.e. incorporation, charter, prospectus, or other evidence)

6. Length of time the organisation has been operating

Note: The organisation must have been in existence for more than 12 months

7. How many members does your organisation have?

8. Are you contributing any in-kind support or money to the project?

9. Contact Name:			
Address:			
City/Town:		Postcode:	
Phone:		Email:	

13. Is this the only application to the Golden Plains Wind Farm Community Benefit Fund from this organisation this year?

Yes

No *(If no, please provide the project name/s and grant/s requested for other applications)*

Other project name/s:

--

Other grant/s requested:
\$

--

14. Has the organisation applied for supplementary funding from another grant source for the same project?

Yes (If yes, please provide the name of the grant source and amount requested)

No

Other grant source name:

--

Grant/s requested:

\$

STEP 2: Please indicate the category in which funding will be used.

- Education and Training
- Community Development
- Health and Wellbeing
- Environment

STEP 3: A detailed description of the proposed use of the funds must be attached to be considered.

This description must include how the funds will benefit the communities that surround the Golden Plains Wind Farm area and timeframes for the project. It should also confirm necessary approvals, insurances and risk management strategies necessary to successfully and safely deliver the project. Please also outline how your application fits with the strategic plan of your group. Please add additional pages as necessary.

--

STEP 4: If your application is successful your organisation will be required to organise public acknowledgement of the funding.

Please indicate how the Golden Plains Wind Farm Community Benefit Fund contribution would be recognised.

Declaration and undertaking to Golden Plains Wind Farm

I/we the person(s) making this declaration on behalf of the organisation named in the application, for funding under the Golden Plains Wind Farm Community Benefit Fund, declare and agree that:

The information contained in this application is true and correct to the best of my/our knowledge, information and belief.

The decision of the Golden Plains Wind Farm Community Reference Group and operator of Golden Plains Wind Farm in relation to the application is final, and that no correspondence will be entered in to if the application is unsuccessful.

Should the organisation be successful in being awarded funding I/we undertake to Golden Plains Wind Farm to expend the fund monies in accordance with this application and the Golden Plains Wind Farm Community Benefit Fund Guidelines (a copy of which I/we have received) and the provisions below.

I/we agree that the organisation will acknowledge Golden Plains Wind Farm as the source of the funding in any marketing material or public notices or announcements relating to the project, and that the use of Golden Plains Wind Farm’s logo or reference to Golden Plains Wind Farm in any media release or public notice must be approved in writing by Golden Plains Wind Farm prior to release.

I/we agree that the organisation will provide Golden Plains Wind Farm with an evaluation of the project against the objectives and expected outcomes set out in the application or as otherwise agreed with Golden Plains Wind Farm at the conclusion of the project, or if shorter, the end of the funding period.

I/we undertake to provide evidence, by forwarding receipts, that the money provided by the Golden Plains Wind Farm Community Benefit Fund has been spent for the purposes as stated in this application. Further, that I/we agree to permit a representative of the Community Benefit Fund to examine records relating to the expenditure of funds.

I/we acknowledge and agree that Golden Plains Wind Farm has an unrestricted right to make public announcements about its involvement in any project funded or partially funded by Golden Plains Wind Farm, and that I/we will comply with any request by Golden Plains Wind Farm to protect its brand or logo.

Name (printed):	
Position (in organisation):	
Date:	

Completed and signed applications, together with supporting attachments are to be forwarded to:

Post

Community Benefit Fund
Golden Plains Wind Farm
Office 4, Nexus Centre
17 Goode St
Gisborne, Victoria, 3437

or

Email

info@goldenplainswindfarm.com.au

Applications must be received by 5pm on Thursday 12 September, 2019